



UNIVERSITY OF  
CALGARY

# Research Impact Assessment: New Approaches and Resources

Hosted by Research Impact Canada

August 17, 2023

Stephanie Warner, PhD

Sarelle Azuelos

**The University of Calgary, located in the heart of Southern Alberta, both acknowledges and pays tribute to the traditional territories of the peoples of Treaty 7, which include the Blackfoot Confederacy (comprised of the Siksika, the Piikani, and the Kainai First Nations), the Tsuut'ina First Nation, and the Stoney Nakoda (including Chiniki, Bearspaw, and Goodstoney First Nations). The City of Calgary is also home to the Métis Nation of Alberta Region 3.**



# Who are we?

**Stephanie Warner, PhD (she/her)**  
Knowledge Engagement Manager

**Sarelle Azuelos, MA (she/her)**  
Knowledge Engagement Specialist

Polls:  
Where are you calling from today?  
How are you connected to research  
impact?

# Agenda

- What is Research Impact Assessment?
- What is DORA? UCalgary's approach to moving the dial.
- Knowledge Engagement and Community Partnerships
  - Origins and Principles
- The Knowledge Engagement Impact Assessment Toolkit
- Questions

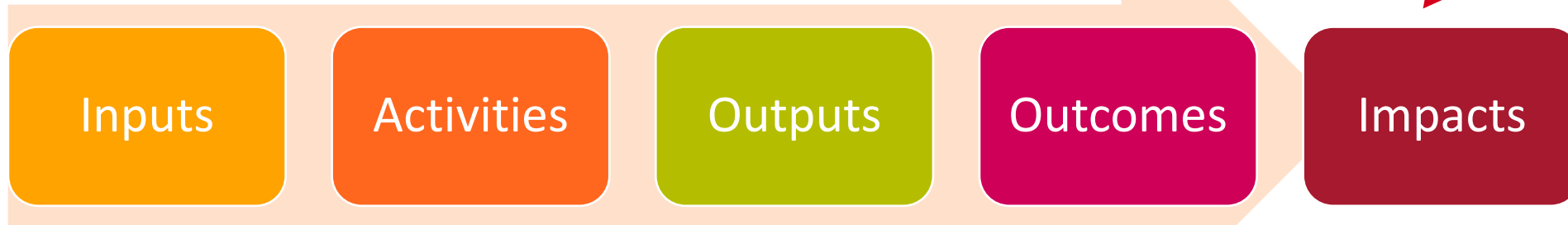


# Research Impact

Impacts are long-term outcomes or effects that take the form of changed thinking and behaviours<sup>1</sup>.

**“The knowledge that we create promotes cultural understanding and social justice, improves quality of life, and helps to secure a prosperous and sustainable future.”**

- Research Plan 2018-2023



Based on W.K. Kellogg Foundation Logic Model



# Research Impact Assessment

- Why do we assess research impact?<sup>2</sup>
  - Advocacy – make the case for research
  - Analysis – how research works and how to shape it
  - Accountability – to tax-payers, donors, society
  - Allocation – allocate resources based on impact
- Emphasis on both quantitative and qualitative (narrative)
  - I.e. Research Excellence Framework Impact Case Studies<sup>3</sup>, Co-Produced Pathway to Impact<sup>4</sup>, Research Impact Canada Impact and Engagement Case Study Guidelines<sup>5</sup>
- Ideally assessed at level of non-academic partners/end-users



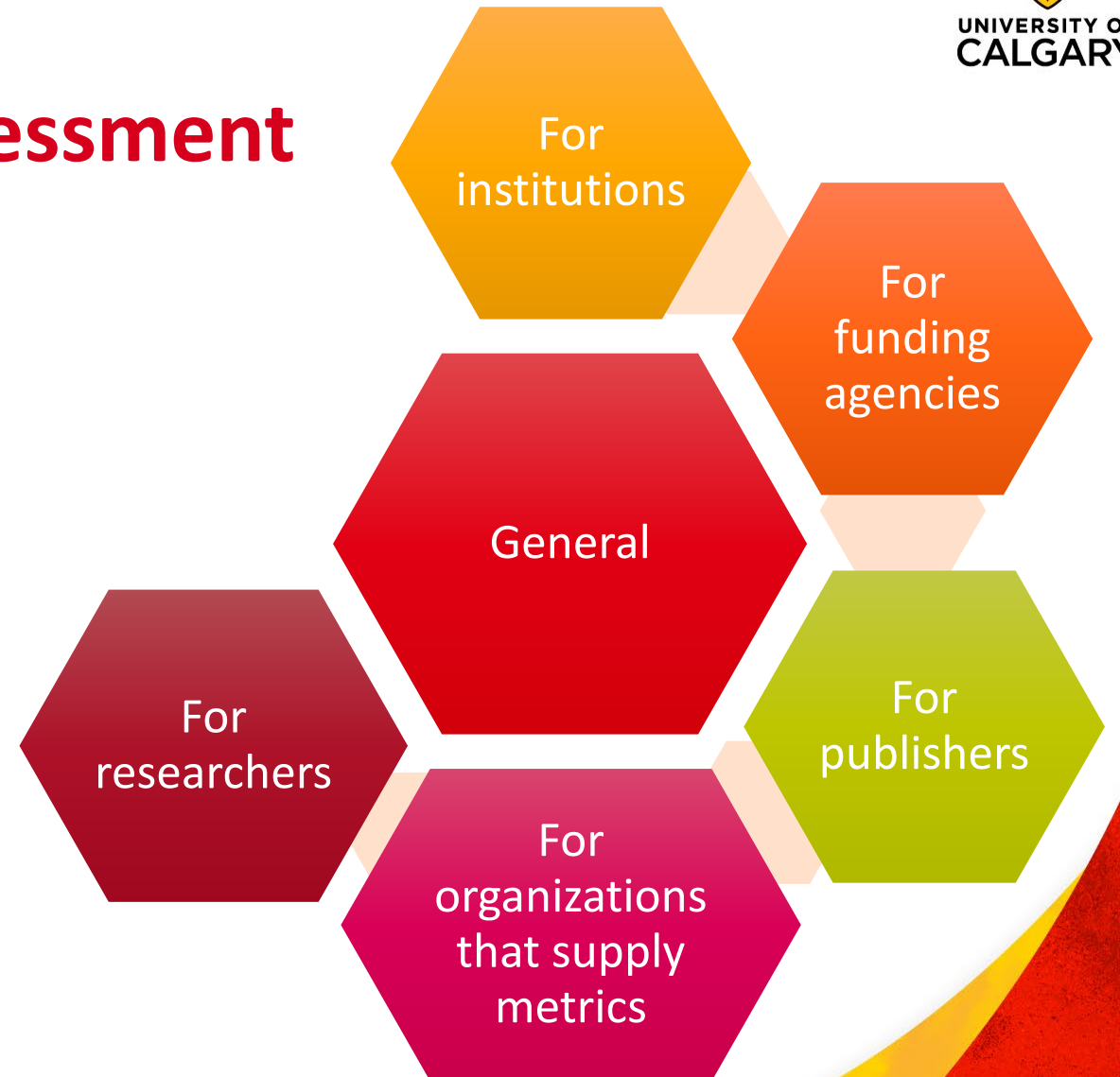
UNIVERSITY OF  
CALGARY

# Declaration on Research Assessment ( DORA )

# Declaration on Research Assessment

University of Calgary signed DORA in 2021. This means we commit to:

- **Move beyond** journal-based metrics
- **Focus on content** of a paper
- **Be explicit about criteria** used to reach hiring, tenure, and promotion decisions
- Consider the **value** and **impact of all research outputs**
- Consider a **broad range of impact measures**, such as influence on policy and practice





## What is knowledge engagement?

Knowledge engagement is a **dynamic and reciprocal process** in which multiple stakeholders come together to address **mutually identified problems**. The purpose of this deliberate engagement is for the co-creation, synthesis, and application of knowledge and evidence to **benefit the community at large**.

Advisory Committee on Knowledge Engagement

# Partnership principles



Mutually  
Beneficial



Reciprocal



Shared and  
Ethical Space



Co-Creation of  
Knowledge



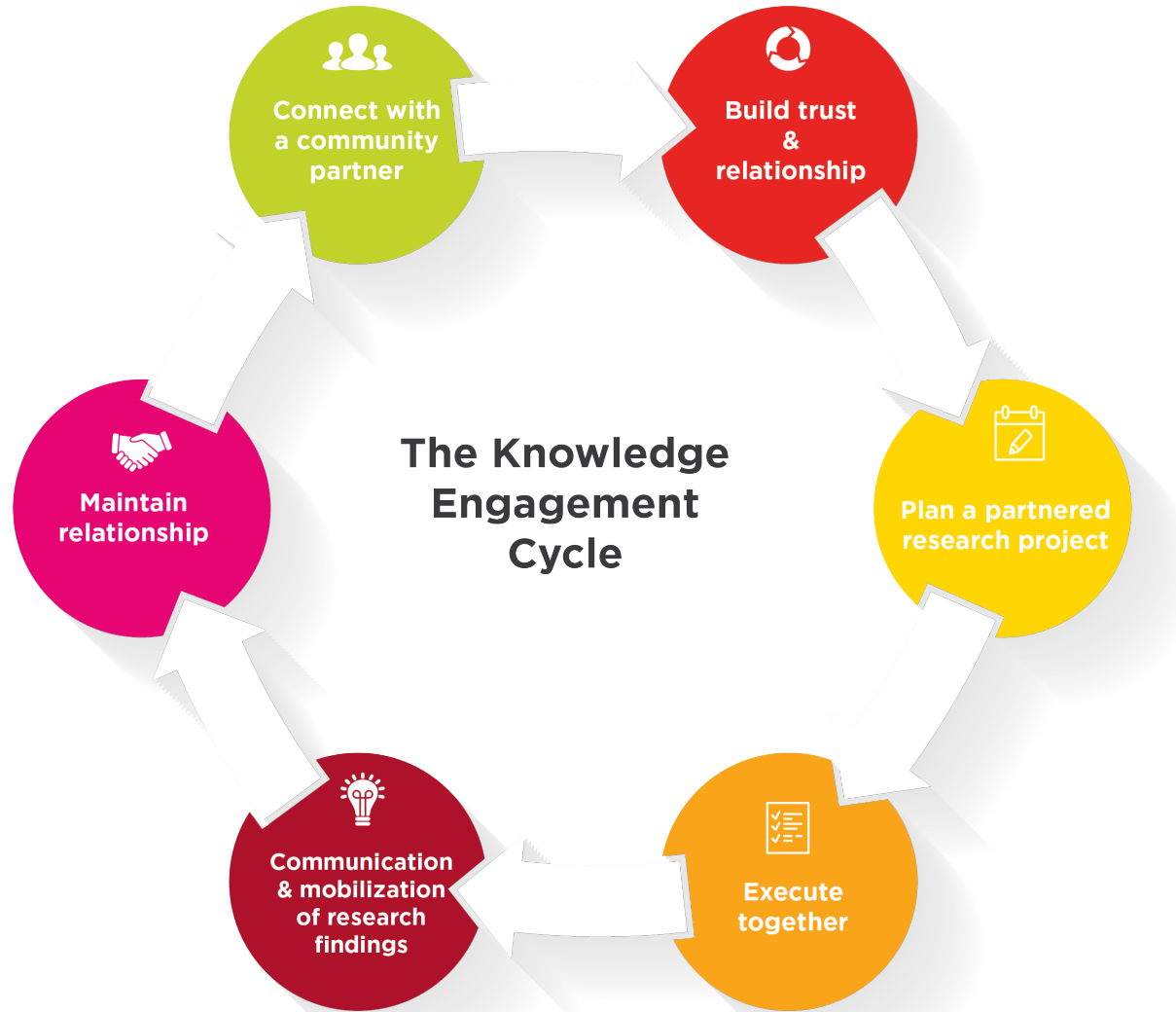
Collaborative  
Partnership  
Development



Exchange of  
Knowledge and  
Resources

Carnegie Community Engagement Classification – Canadian Pilot

# KE Cycle



# Impact Evaluation Framework

## Project Overview

A Needs Assessment was conducted in 2014 and 2020.

- knowledge engagement work comes with challenges, including a lack of or inconsistent recognition

Knowledge Engagement Implementation Committee recommended developing a framework for faculty members to evaluate their own projects.

# Knowledge Engagement Impact Assessment Toolkit

Funded by The Conference Board of Canada through the Government of Canada's Future Skills Centre. Supported by Research Impact Canada.

RESEARCH  
**IMPACT**  
CANADA | RÉSEAU **IMPACT**  
RECHERCHE  
CANADA



**Future  
Skills**  
Centre

Centre des  
**Compétences**  
**futures**



# Priorities identified by Steering Group

## Principles and Framework

Flexible, scalable, adaptable, inclusive, living

Balance data and stories (quantitative and qualitative)

Captures the diversity of academic, partners and funder priorities

Open to diverse ways of knowing and doing (Indigenous research, community engaged research, local and global, etc.)

Can show change over time – planning for impact

Attentive to short, mid and long term impact

Commitment to respect, trust, mutually empowered, long-term relationships

## Measurement

Social and cultural impact

Co-creation with community (integrated KT – working with partners in planning and doing)

Partner Engagement

Benefit to future research and knowledge use

Innovative/innovation outcomes

Continued relationships

Reach

Socially, culturally, geographically appropriate and ground contact and knowledge application

Multi-directional Flow (knowledge, information and benefits)

Audience and Knowledge User perspective (what and why do we measure and for whom)



# KE Impact Evaluation Framework

## Reciprocity



there is a flow of knowledge, information and benefits in both directions between the University and its community partners in activities

## Externalities (Reach)



there are benefits outside of those accruing to the partners and these should contribute to building social trust to enhance sustainability, wellbeing and cohesion to the building of a learning and knowledge based society

## Access



partners have access to facilities and resources instead of receiving a one-off provision of goods or services

## Partnerships



partnerships deepen and develop through the extended reciprocity and improved access

# KE Impact Assessment Toolkit

Download at [ucalgary.ca/ke-toolkit](https://ucalgary.ca/ke-toolkit)

- KE Assessment **Matrix**:
  - impact indicators related to REAP and strategic context
  - lifecycle stages: planning, monitoring and impact assessment
- KE Assessment **Portrait**:
  - tells the story of the of the activity, initiative, project or program

Comes with **Usage Guide**. Website with short videos.

\*assessment from shared space or community perspective

Poll:  
Have you ever involved a  
partner in your  
assessment?



# Portrait

A collaborative, narrative tool to tell the story of research impact.

- Use alongside the Matrix, or on its own.
- Take time to describe the relationship and partnership development process.
- Identify learnings, including those that come from setbacks and challenges
- Celebrate successes

# Adapting the Toolkit

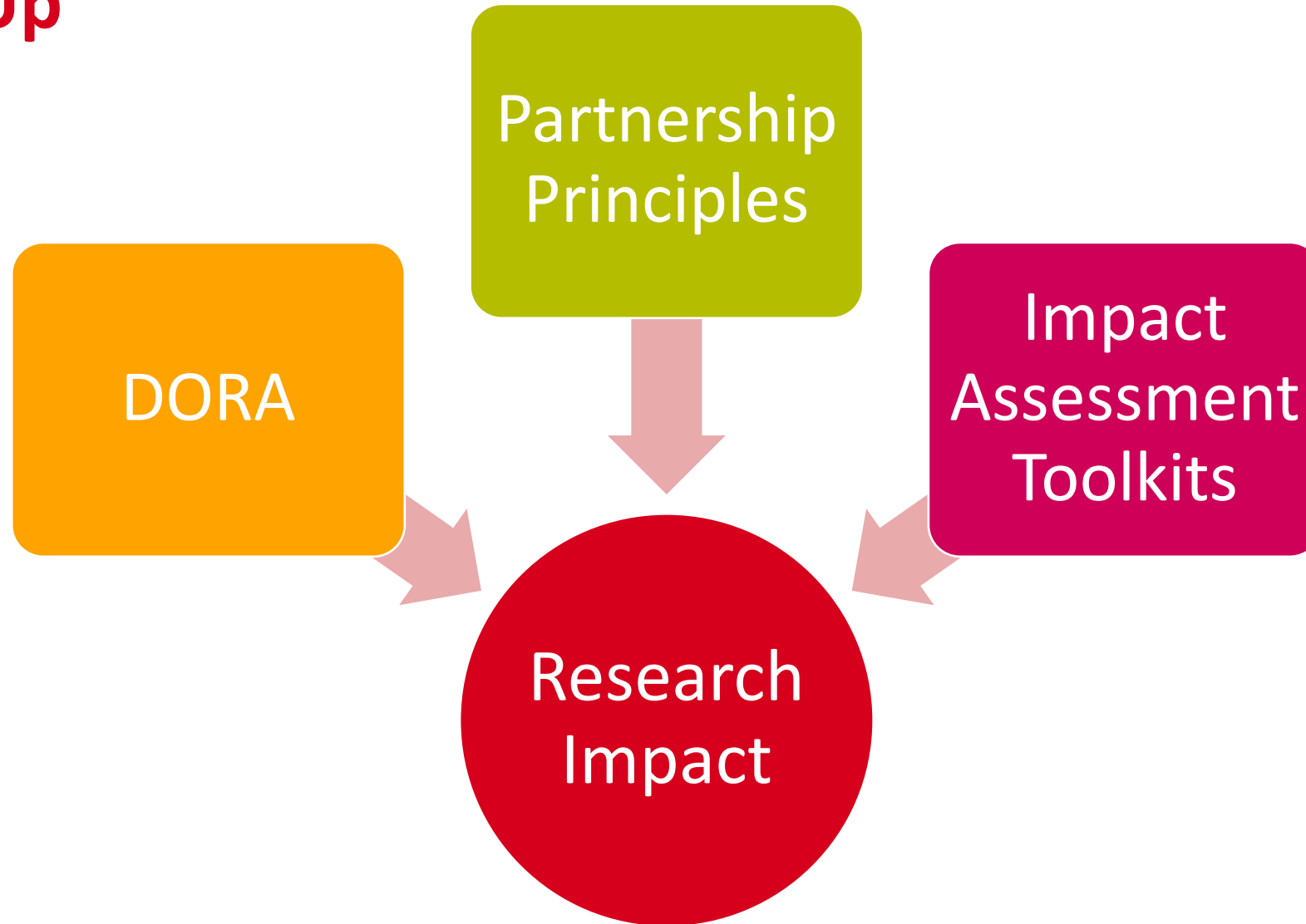
## Matrix

- adding additional impact indicators
  - co-created with community
  - selected from provided alternatives

## Portrait

- telling a unique KE impact story

# Wrap Up



## Learn More...

Visit the Toolkit Website: [ucalgary.ca/ke-toolkit](https://ucalgary.ca/ke-toolkit)

Contact our team: [ucalgary.ca/knowledge-engagement](https://ucalgary.ca/knowledge-engagement)



# Q & A





# References

1. Guidelines for Effective Knowledge Mobilization. Social Sciences and Humanities Research Council. Accessed 2023 Aug 16 from [https://www.sshrc-crsh.gc.ca/funding-financement/policies-politiques/knowledge\\_mobilisation-mobilisation\\_des\\_connaissances-eng.aspx#a3](https://www.sshrc-crsh.gc.ca/funding-financement/policies-politiques/knowledge_mobilisation-mobilisation_des_connaissances-eng.aspx#a3)
2. Adam, P., Ovseiko, P.V., Grant, J. *et al.* ISRIA statement: ten-point guidelines for an effective process of research impact assessment. *Health Res Policy Sys* **16**, 8 (2018).  
<https://doi.org/10.1186/s12961-018-0281-5>
3. REF Impact. Accessed August 16, 2023 at <https://www.ukri.org/who-we-are/research-england/research-excellence/ref-impact/#contents-list>
4. Phipps, D., Cummins, J., Pepler, D.J., Craig, W. and Cardinal, S., 2016. The Co-produced Pathway to Impact Describes Knowledge Mobilization Processes. *Journal of Community Engagement and Scholarship*, 9(1), p.31-40.DOI: <https://doi.org/10.54656/GOKH9495>
5. Impact and Engagement Case Study Guidelines. Research Impact Canada. Accessed August 16, 2023 from <https://researchimpact.ca/resources/impact-and-engagement-case-study-guidelines/>.