

RESEARCH
IMPACT
CANADA

RÉSEAU **IMPACT**
RECHERCHE
CANADA

NEW MEMBER WELCOME KIT

FOR MORE INFORMATION

info@researchimpact.ca

researchimpact.ca



Last updated: October 2024

WELCOME TO RESEARCH IMPACT CANADA



[Research Impact Canada](#) (RIC) is committed to helping universities and other organizations across Canada maximize the impact of research for communities. From sharing best practices and co-developing resources to delivering training in knowledge mobilization skills, we are an [open and collaborative network of 30+ institutions](#) (and growing!) across Canada.

RIC's focus is bilingual, national in scope, and geared towards academic and non-academic stakeholders from the public, private and non-profit sectors. To increase institutional capacity and maximize the impacts of research, we work with all parties – researchers, research administrative staff, academics, students, faculty, public sector leaders, projects dedicated to skills development – across a variety of organizations. To facilitate your introduction to RIC, we have put together this welcome kit.

Contents

- 1 Welcome to Research Impact Canada
- 2 About Research Impact Canada
- 3 Benefits of Membership
- 4 Overview of RIC Committees
- 5 Committee Structure
- 6 Roles and Responsibilities of RIC Members
- 7 Communication Channels
- 8 Current Members
- 9 Activities and Partnerships
- 10 Contact Information

ABOUT RESEARCH IMPACT CANADA



RIC's mission is to build Canada's capacity to be a leader in the practices, services, and tools that lead to public uptake of research results, thereby ensuring to relevant stakeholders and the public the positive impacts of researchers' investigations. We focus on the institutional capacity to support knowledge mobilization.

Mission

Building Canada's capacity to be a leader in the practices, services, and tools that lead to public uptake of research results, thereby ensuring to relevant stakeholders and the public the positive impacts of researchers' investigations and mobilizing knowledge.

Vision

A globally leading network that enables researchers and their partners to demonstrate contribution to and impact of mobilizing knowledge and research excellence.

Values

- We believe that academic research contributes to social, cultural, economic, environmental, and health benefits across local and global communities.
- We believe that the university research enterprise encompasses research, scholarship and creative activity by faculty, students and staff across all disciplines.
- We value community, industry and government partners as active participants in conducting research.
- We believe that knowledge mobilization services reflect the capacity and opportunities of institutions.

BENEFITS OF MEMBERSHIP



Knowledge mobilization helps make research useful to society by supporting engaged scholarship from inception to impact. RIC is a pan-Canadian network with international connections. Membership in RIC helps institutions be successful in this emerging field. The real benefit for Canada – the impact of RIC – is when staff at RIC member institutions support the knowledge mobilization/translation, community-based research, public engagement, service learning, data access, and research communications of faculty, students, and their research partners/stakeholders.

Benefits for Institutions

- Visibility among leaders, serving as a national advocacy voice for knowledge mobilization practice.
- Participation in our inclusive community of practice that includes 30+ university institutions and non-academic organizations.
- Access to knowledge mobilization centres of expertise for regional, provincial, and national collaboration.
- Cooperative knowledge-sharing of best practices, tools, and resources.
- Opportunity for graduate students to apply for RIC scholarship programs.
- Involvement in national initiatives that raise the profile of knowledge mobilization.
- Enhanced ability to maximize research impact at your organization with your local communities.

Benefits for Individuals

- Access to tools for public engagement, grant applications, research partnerships, and more.
- Participation in collaborative research opportunities from national organizations.
- Connections with research impact practitioners in your field or work function to support your work.
- Invitations to member-only events, training, webinars, and programs.
- Invitation to RIC's Annual General Meeting.
- Enhanced ability to serve the knowledge mobilization needs of faculty members and students.

OVERVIEW OF RIC COMMITTEES



Executive Lead Committee

This committee provides strategic oversight, approves any changes to the budget, and approves all new members recommended by the Implementation Committee.

Implementation Committee

The Implementation Committee is responsible for membership, finance, and budget decisions, and the implementation of RIC's operational and strategic plans. All other working groups and committees submit recommendations to this group for decision-making.

Member Engagement Committee

The Member Engagement committee provides an opportunity for members to engage in and provide input into initiatives of the network. This committee meets one month ahead of the Implementation Committee and can provide recommendations.

Professional Development (PD) Committee

The Professional Development committee focuses on sharing learning opportunities and the transfer and exchange of good practices in knowledge mobilization across the network.

Evaluation Committee

The Evaluation Committee works to advance the collective impact of the network by creating tools to assess and articulate the impacts of research from member universities, as well as support the development of evaluation tools and products for the network.

Francophone and Bilingualism Committee





The Francophone and Bilingualism Committee works on initiatives to increase the capacity for bilingualism within the RIC network. They have developed recommendations and best practices around bilingualism and are driving French-first content.

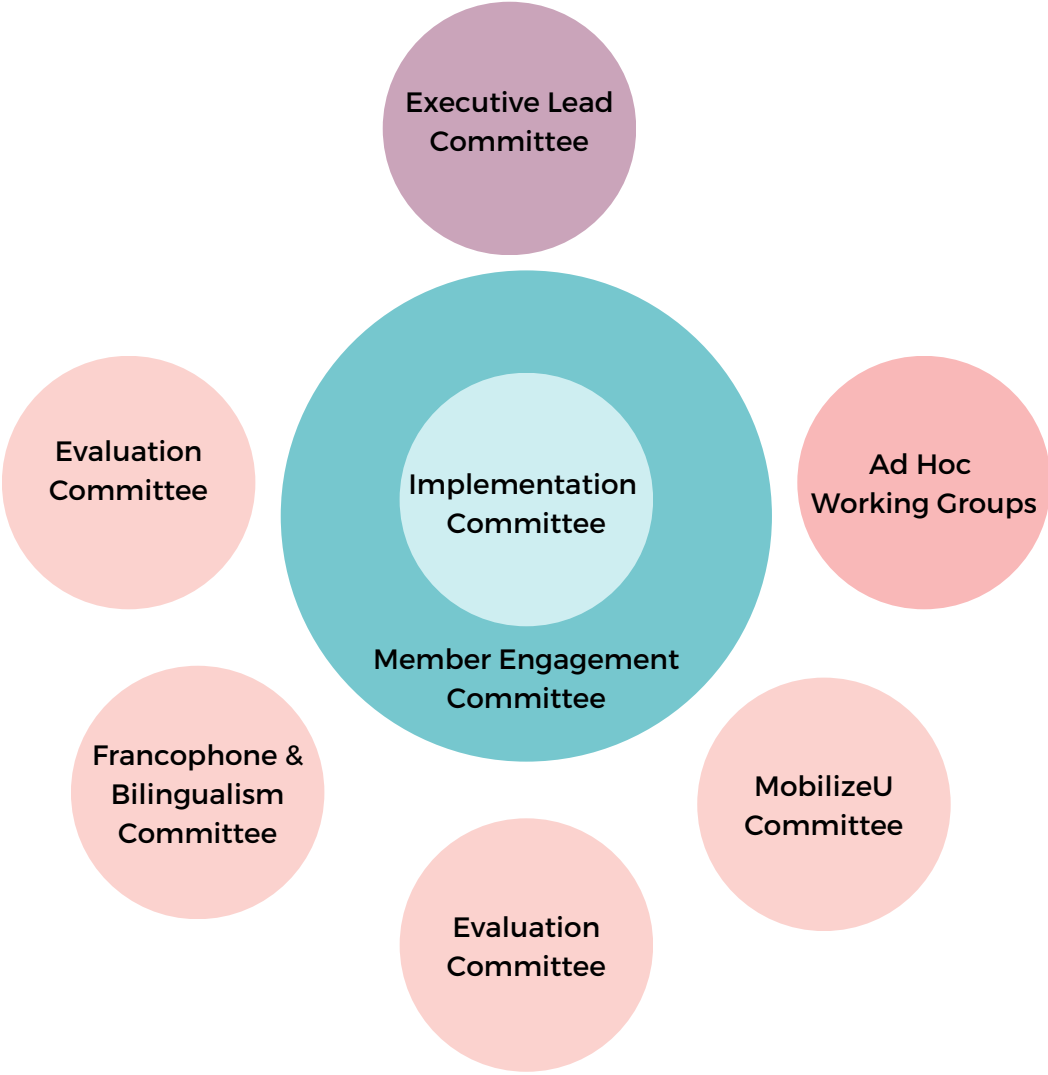
Ad Hoc Working Groups

Ad Hoc Working Groups are created on an as-needed basis to work on specific RIC goals. Previous working groups have included a Yaffle working group, a website working group, and a branding working group.

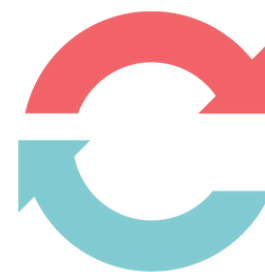
COMMITTEE STRUCTURE



-   Governance Committees
-   Member-Driven Committees
-  Executive Committee



ROLES AND RESPONSIBILITIES OF RIC MEMBERS



The network's vitality and dynamism are based on the contributions of its members. Members are expected to contribute to the activities of the network and its committees based on their role in the organization. These responsibilities are outlined in the table below.

Institutional contact member: This role is designated by his/her/their institution to ensure its representation in the network.

Participant member: Anyone from a RIC member institution who has submitted a request to the institutional contact member to participate in RIC's activities.

Learner: Anyone from a RIC institution is welcome to participate as a Learner.

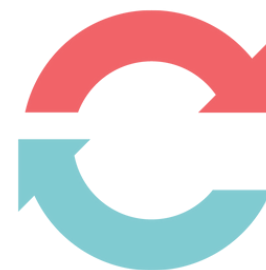
Roles and Responsibilities	Institutional Contact	Participant Member	Learner
Communication and Learning			
Read RIC's documentation (welcome kit, website, etc.).	✓	✓	✓
Create and update member profile (website).	✓	✓	
Contribute to RIC communications, including blog, Twitter, LinkedIn.	✓	✓	
Share RIC information (news, reports, activities) within institution.	✓		
Brief new members from institution and ensure they receive the current welcome kit.	✓		
Sharing and Networking			
Participate in RIC working groups and committees.	✓	✓	
Participate in other RIC activities (Dr. RIC, etc.).	✓	✓	✓
Attend the RIC Annual General Meeting.	✓	✓	
Participate in the RIC Member Engagement Committee and, based on availability and application, participate in the Implementation Committee.	✓	✓	
Participate in and/or support joint presentations (at CARA, Congress, CUExpo, CKF, etc.) and welcome to attend Dr. RIC.	✓	✓	✓
Membership			
Ensure the payment of the annual RIC membership fee.	✓		
Institutional point of contact for questions and inquiries about RIC.	✓		

COMMUNICATION CHANNELS



Purpose <i>If you have...</i>	Communication Channel <i>Then please use...</i>	Audience To reach...	Instructions and additional notes
<ul style="list-style-type: none"> • Questions / updates to committees or working groups • Questions / updates to governance • Discussions within a committee or working group • Access to RIC documents 	<p style="text-align: center;">Microsoft Teams</p>	<ul style="list-style-type: none"> • RIC Committees • Working groups • RIC Operational Team 	<p>See Research Impact Canada Microsoft Teams Guide</p> <p>We strongly encourage RIC members to interact via Microsoft Teams</p>
<ul style="list-style-type: none"> • Announcements, events or projects you would like RIC to help amplify promotions, and reach a broader audience 	<p style="text-align: center;">Monthly Newsletter</p>	<ul style="list-style-type: none"> • Entire RIC network across institutions • Anyone you would like to be kept updated about RIC activities 	<p>To add content to the newsletter, please contact Sandy Chan at sdychan@yorku.ca with [Newsletter] in the subject line</p> <p>To sign up for the newsletter, go to researchimpact.ca (bottom of the page)</p>
<ul style="list-style-type: none"> • Announcements, events or projects you would like RIC to help amplify promotions, and reach a broader audience 	<p style="text-align: center;">Social Media (Twitter and LinkedIn)</p>	<ul style="list-style-type: none"> • Anyone you would like to be kept updated about RIC activities • Anyone interested in knowledge mobilization 	<p>Twitter: Please tag @researchimpact in your post</p> <p>LinkedIn: Please contact Sandy Chan at sdychan@yorku.ca with [LinkedIn Post] in the subject line</p>
<ul style="list-style-type: none"> • Questions about RIC operational items • Updates about "Future Skills" projects • Communications or meeting with RIC Operational Team 	<p style="text-align: center;">Email</p>	<ul style="list-style-type: none"> • RIC Operational Team 	<p>Please contact Connie Tang at tangc@yorku.ca</p>

LIST OF MEMBERS



Athabasca University
Bishop's University
Brain Canada
Carleton University
Centre for International Governance Innovation
Chronic Pain Centre of Excellence for Canadian Veterans
Concordia University
Lakehead University
London South Bank University, UK
McMaster University
Memorial University
Northern Alberta Institute of Technology
Ontario Shores
Saint Paul University
Simon Fraser University
The Royal Ottawa Mental Health Centre
Université de Montréal
Université du Québec à Montréal
Université Laval
University of Alberta
University of Brighton, UK
University of Bristol, UK
University of British Columbia
University of Calgary
University of Guelph
University of Ottawa
University of Regina
University of Saskatchewan
University of Victoria
University of Waterloo
University of Windsor
University of Winnipeg
University of York
Waypoint Mental Health Centre
Weston Family Foundation
York University

ACTIVITIES AND PARTNERSHIPS



Dr. RIC

Dr. RIC is a monthly call where the agenda is set by RIC members as a forum to discuss whatever is on their mind as it relates to knowledge mobilization. Topics have included internal awards, tenure & promotion, institutional KMB plans, role of libraries and open access as examples.

Dr. RIC arose as a suggestion at a RIC Annual Meeting as a mechanism to help RIC members maintain connections to each other. Dr. RIC was imagined as a “group therapy” session where we could support each other’s practices. The content is driven by the needs of the RIC membership. As a “by members for members” program, it has become RIC’s principal platform for informal exchange and sharing of information, tools and resources.

The Future Skills Centre

On February 14, 2019, Employment and Social Development Canada (ESDC) announced that Toronto Metropolitan University (TMU), the Conference Board of Canada (CBOC), and Blueprint, a non-profit research organization, were selected to partner and operate Canada’s new Future Skills Centre (FSC). FSC funds projects across Canada that develop, test, and measure new approaches to **skills assessment and development**.

The FSC is funding projects to:

- Identify emerging skills that are in-demand now and into the future to help Canadians make informed training decisions,
- Develop, test and evaluate innovative approaches to find out what will help Canadians gain the skills they need to adapt and succeed in the workforce,
- Share results and best practices across all sectors and with Canadians to support investment in the skills needed for the future.

To champion inclusive career development in Canada and support diverse stakeholders across the skills training and workforce development ecosystem, the FSC Community of Practice (CoP) was launched to encourage audiences to connect in a self-directed way and access people, events, and resources. In the spring of 2021, RIC was invited to provide knowledge mobilization support for the FSC CoP. RIC contributes to the FSC CoP, ensuring that knowledge is shared through an integrated pan-Canadian network of diverse partners and stakeholders across the skills development and training ecosystem.

CONTACT INFORMATION



David Phipps
Network Director
dhipps@yorku.ca



Connie Tang
*Director, Strategy &
Business Development*
tangc@yorku.ca



Sandy Chan
Knowledge Mobilization Specialist
sdychan@yorku.ca