

RESEARCH
IMPACT
CANADA | RÉSEAU **IMPACT**
RECHERCHE
CANADA

NEW MEMBER WELCOME KIT

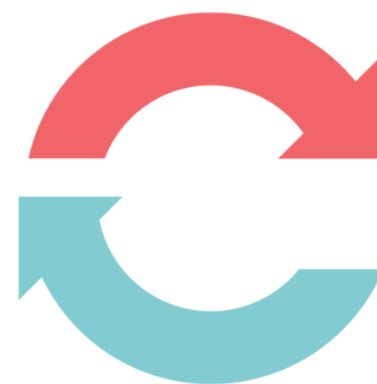


FOR MORE INFORMATION

info@researchimpact.ca

current update: April 2022

WELCOME TO RESEARCH IMPACT CANADA



[Research Impact Canada](#) (RIC) is committed to helping universities and other organizations across Canada maximize the impact of research for communities. From sharing best practices and co-developing resources to delivering training in knowledge mobilization skills, we are an [open and collaborative network of 20+ institutions](#) (and growing!) across Canada.

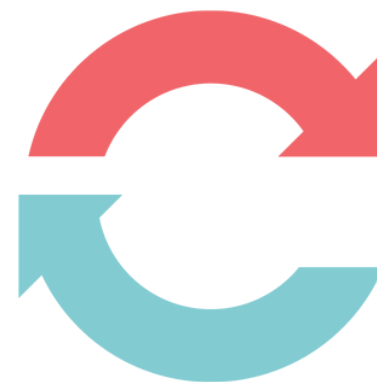
RIC's focus is bilingual, national in scope, and geared towards academic and non-academic stakeholders from the public, private and non-profit sectors. To increase institutional capacity and maximize the impacts of research we work with all parties – researchers, research administrative staff, academics, students, faculty, public sector leaders, projects dedicated to skills development – across a variety of organizations, without limitations or restrictions. To facilitate your introduction to RIC, please take a look at our Welcome Kit.

Contents

Welcome to Research Impact Canada	1
About Research Impact Canada	2
Benefits of Membership	3
Overview of RIC Committees	4
Committee Structure	5
Roles and Responsibilities of RIC Members	6
Communication Channels	7
Current Members	8
Activities and Partnerships	9
Contact Information	10

This material is an open door to RIC. Its goal is to facilitate your knowledge on RIC, invite you to participate, contribute, and engage the conversation.

ABOUT RESEARCH IMPACT CANADA



Questions can be directed to:

- David Phipps, Director of Research Impact Canada (dphipps@yorku.ca)
- Connie Tang, Director of Strategy and Business Development (tangc@yorku.ca)
- A neighbour university member if you have any questions

Mission

- Building Canada's capacity to be a leader in the practices, services, and tools that lead to public uptake of research results, thereby ensuring to relevant stakeholders and the public the positive impacts of researchers' investigations and mobilizing knowledge.

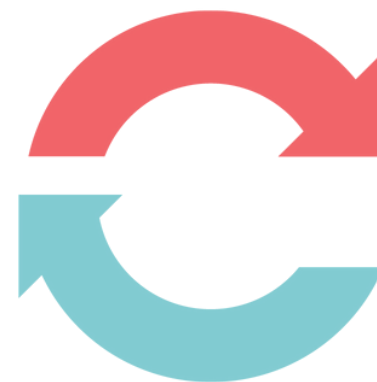
Vision

- A globally leading network that enables researchers and their partners to demonstrate contribution to and impact of mobilizing knowledge and research excellence.

Values

- Academic research contributes to social, cultural, economic, environmental, and health benefits across local and global communities
- University research enterprise encompasses research, scholarship and creative activity by faculty, students and staff across all disciplines
- community, industry and government partners are active participants in conducting research
- knowledge mobilization services reflect the capacity and opportunities of institutions

BENEFITS OF MEMBERSHIP



Knowledge mobilization helps make research useful to society by supporting engaged scholarship from inception to impact. RIC is a pan-Canadian network with international connections. Membership in RIC helps institutions be successful in this emerging field. The real benefit for Canada – the impact of RIC – is when staff at RIC member institutions support the knowledge mobilization/translation, community-based research, public engagement, service learning, data access, and research communications of faculty, students and their research partners/stakeholders.

Organizational Membership Benefits

- Visibility among leaders, serving as a national advocacy voice for knowledge mobilization practice
- Participation in our inclusive community of practice that includes 20+ university institutions and non-academic organizations
- Access to knowledge mobilization centres of expertise for regional, provincial, and national collaboration
- Cooperative knowledge sharing of best practices, tools, and resources
- Opportunity for graduate students to apply for RIC scholarship programs
- Involvement in national initiatives that raise the profile of knowledge mobilization
- Enhanced ability to maximize research impact at your organization with your local communities

Individual Membership Benefits

- Access to tools for public engagement, grant applications, research partnerships, and more
- Participating in collaborative research opportunities from national organizations
- Connections with research impact practitioners in your field or work function to support your work
- Invitations to member-only events, training, webinars, and programs
- Invitation to RIC's Annual General Meeting
- Enhanced ability to serve the knowledge mobilization needs of faculty members and students

OVERVIEW OF RIC COMMITTEES

Executive Lead Committee

This committee provides strategic oversight, approves any changes to budget and all new members recommended by Governance Committee.

Governance Committee

The Governance Committee, composed of approximately 20 people, is responsible for membership, finance, and budget decisions, as well as the implementation of RIC's operational and strategic plans. Members oversee the planning, framework, and execution of the annual RIC meeting working with the host institution. All other working groups and committees submit recommendations to this group for decision making. The Governance Committee can, where needed, establish working groups to explore issues and make recommendations.

Governance Steering Committee

The Governance Steering Committee is a group of 5-7 members who help provide more detailed guidance on strategic initiatives, updates, and planning. The Governance Steering Committee then makes recommendations to the Governance Committee in an effort to expedite the final decision-making at Governance Committee meetings. The Governance Steering Committee meets 1 month before every Governance Committee meeting.

Professional Development Committee

The Professional Development committee focuses on sharing learning opportunities and the transfer and exchange of good practices in knowledge mobilization (KMb) across the network. The committee provides coordination and leadership around the advancement of knowledge mobilization scholarship within RIC, and promotes and coordinates opportunities for RIC engagement in areas of KMb scholarship.

Evaluation Committee

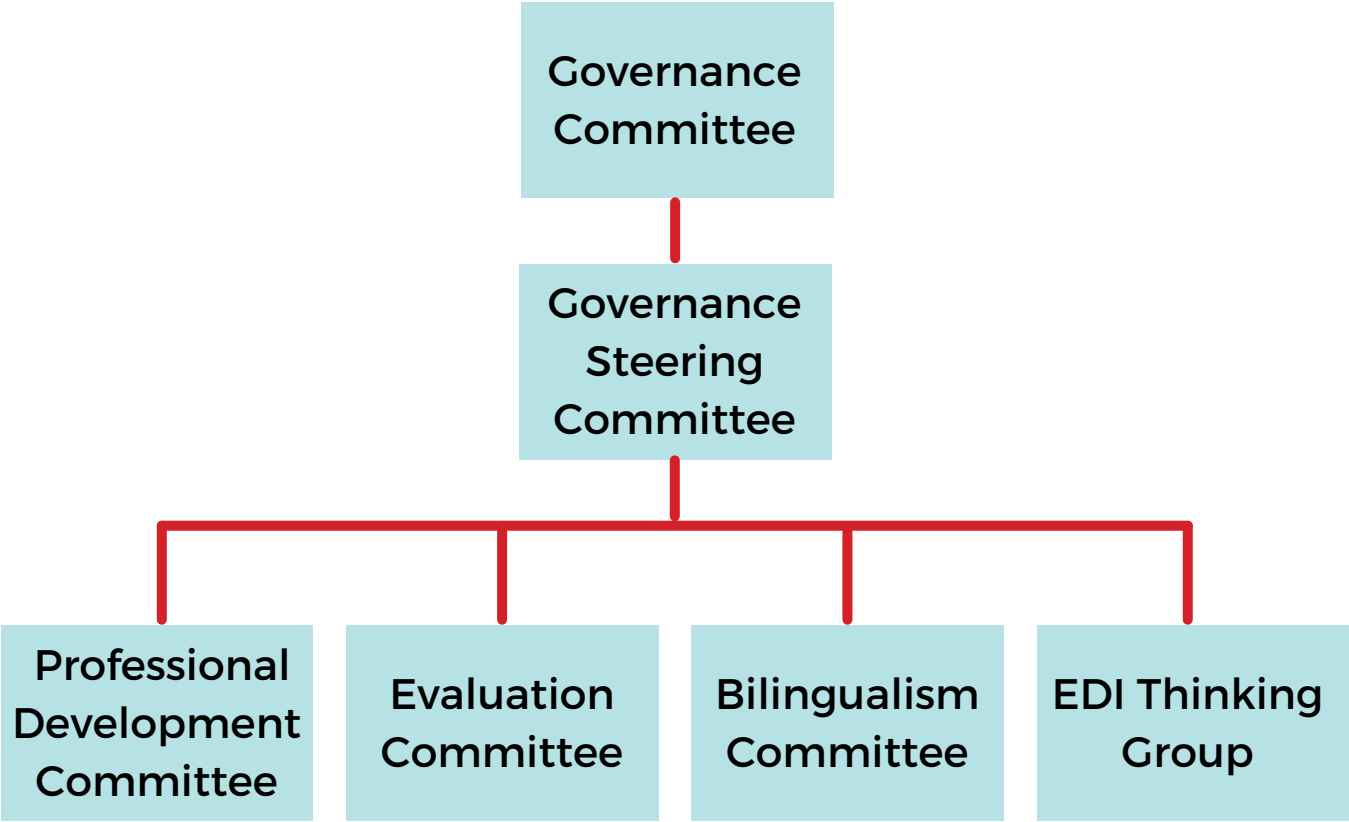
The Evaluation Committee works to advance the collective impact of the network by creating tools to assess and articulate the impacts of research from member universities, as well as support the development of evaluation tools and products for the network.

Ad Hoc Working Groups

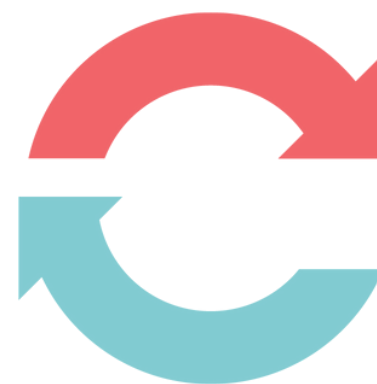
Bilingualism Committee: The Bilingualism Committee was created to ensure equity and representation of both official languages in RIC's governance and operations.

Equity, Diversity and Inclusion Thinking Group: Some of the brokers in RIC member institutions are pushing the reasoning and reflection around KMb and EDI, further exploring the relationship between both. The thinking group gathers KMb workers and EDI folks from RIC member institutions who identify as women, racialized, LGBTQ+, Indigenous, and living with visible and invisible disabilities.

COMMITTEE STRUCTURE



ROLES AND RESPONSIBILITIES OF RIC MEMBERS



The network's vitality and dynamism are based on the contributions of its members. Members are expected to contribute to the activities of the network and its committees based on their role in the organization. These responsibilities are outlined in the table below.

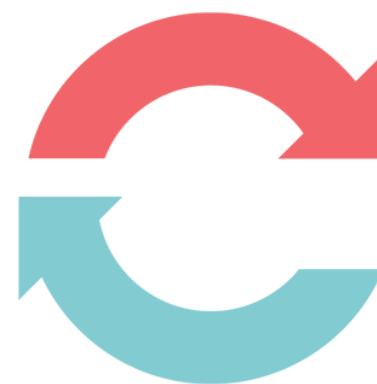
Institutional contact member: This role is designated by his/her/their institution to ensure its representation within the network.

Participant member: Anyone from a RIC member institution who has submitted a request to the institutional contact member to participate in RIC's activities.

Learner: Anyone from a RIC institution is welcome to participate as a Learner.

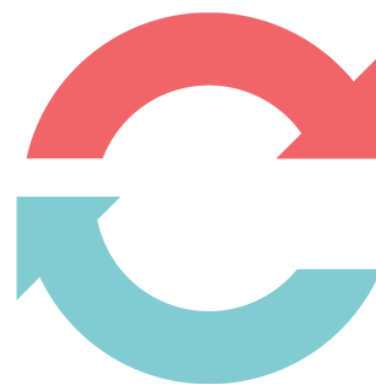
Roles and Responsibilities	Institutional Contact	Participant Member	Learner
Communication and Learning			
Read RIC's documentation (welcome kit, website, etc.).	✓	✓	✓
Create and update member profile (website).	✓	✓	
Contribute to RIC communications, including blog, Twitter, LinkedIn.	✓	✓	
Share RIC information (news, reports, activities) within institution.	✓		
Brief new members from institution, and ensure they receive the current welcome kit.	✓		
Sharing and Networking			
Participate in RIC working groups and committees.	✓	✓	
Participate in other RIC activities (Dr. RIC, etc.).	✓	✓	✓
Attend the RIC Annual General Meeting.	✓	✓	
Participate in the RIC Governance Committee and, based on availability and application, participate in the Steering Committee.	✓	✓	
Participate in and/or support joint presentations (at CARA, Congress, CUExpo, CKF, etc.) and welcome to attend Dr. RIC.	✓	✓	✓
Membership			
Ensure the payment of the annual RIC membership fee.	✓		
Institutional point of contact for questions and inquiries about RIC.	✓		

COMMUNICATION CHANNELS

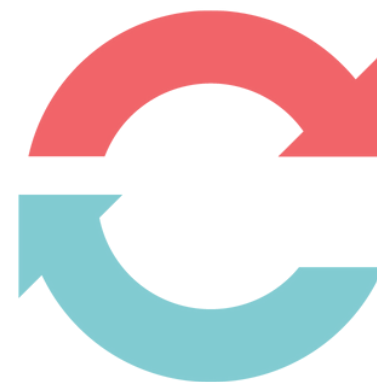


Purpose <i>If you have...</i>	Communication Channel <i>Then please use...</i>	Audience To reach...	Instructions and additional notes
<ul style="list-style-type: none"> Questions / updates to committees or working groups Questions / updates to governance Discussions within a committee or working group Access to RIC documents 	Microsoft Teams	<ul style="list-style-type: none"> RIC Committees Working groups Governance (both full and steering) RIC Operational Team 	<p>See Research Impact Canada Microsoft Teams Guide</p> <p>We strongly encourage RIC members to interact via Microsoft Teams</p>
<ul style="list-style-type: none"> Announcements, events or projects you would like RIC to help amplify promotions, and reach a broader audience 	Monthly Newsletter	<ul style="list-style-type: none"> Entire RIC network across institutions Anyone you would like to be kept up-to-date about RIC activities 	<p>To add content to the newsletter, please contact Sylvia Urbanik at urbanik@yorku.ca with [Newsletter] in the subject line</p> <p>To sign up for the newsletter, go to researchimpact.ca (bottom of the page)</p>
<ul style="list-style-type: none"> Announcements, events or projects you would like RIC to help amplify promotions, and reach a broader audience 	Social Media (Twitter and LinkedIn)	<ul style="list-style-type: none"> Anyone you would like to be kept up-to-date about RIC activities Anyone interested in knowledge mobilization 	<p>Twitter: please tag @researchimpact in your post</p> <p>LinkedIn: please contact Lis Huang at huanage@yorku.ca with [LinkedIn Post] in the subject line</p>
<ul style="list-style-type: none"> Questions about RIC operational items Updates about "Future Skills" projects Communications or meeting with RIC Operational Team 	Email	<ul style="list-style-type: none"> RIC Operational Team 	<p>Please contact Connie Tang at tangc@yorku.ca</p>

CURRENT MEMBERS



ACTIVITIES AND PARTNERSHIPS



Dr RIC

Dr RIC is a monthly call where the agenda is set by RIC members as a forum to discuss whatever is on their mind as it relates to knowledge mobilization. Topics have included internal awards, tenure & promotion, institutional KMB plans, role of libraries and open access as examples.

Dr RIC arose as a suggestion at a RIC Annual Meeting as a mechanism to help RIC members maintain connections to each other. Dr RIC was imagined as a “group therapy” session where we could support each other’s’ practices. The content is driven by the needs of the RIC membership. As a “by members for members” program it has become RIC’s principal platform for informal information exchange and sharing information, tools and resources.

The Future Skills Centre

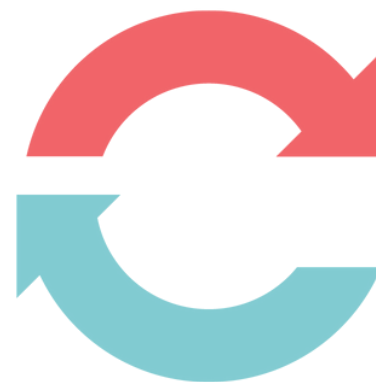
On February 14, 2019 Employment and Social Development Canada (ESDC) announced that Ryerson University, the Conference Board of Canada (CBoC), and Blueprint, a non-profit research organization, were selected to partner and operate Canada’s new Future Skills Centre (FSC). FSC operates at arm’s length from the Government of Canada to fund projects across Canada that develop, test and measure new approaches to **skills assessment and development**.

The FSC is funding project to:

- identify emerging skills that are in demand now and into the future to help Canadians make informed training decisions
- develop, test and evaluate innovative approaches to find out what will help Canadians gain the skills they need to adapt and succeed in the workforce
- share results and best practices across all sectors and with Canadians to support investment in the skills needed for the future

RIC is now a consortium partner for FSC’s knowledge mobilization efforts. We leverage the strengths and connections of both organizations to provide individualized support for knowledge mobilization efforts during and after the completion of skills-development, FSC-funded projects. RIC also ensures that stakeholders are engaged, that research (where appropriate) is co-produced, and that results are widely disseminated, especially to marginalized and harder to reach audiences. RIC also greatly contributes to the FSC Community of Practice, ensuring that knowledge is shared at-large within the skills-development ecosystem in Canada.

CONTACT INFORMATION



RIC Staff

Select staff shown. The full team can be found at:
<https://researchimpact.ca/about-us/#team>



David Phipps
Network Director
dphipps@yorku.ca



Connie Tang
Director, Strategy &
Business Development
tangc@yorku.ca



Sylvia Urbanik
Knowledge Mobilization Specialist
urbanik@yorku.ca



Sandy Chan
Operations Officer
sdychan@yorku.ca

Social Media



@researchimpact



Research Impact Canada

www.researchimpact.ca