

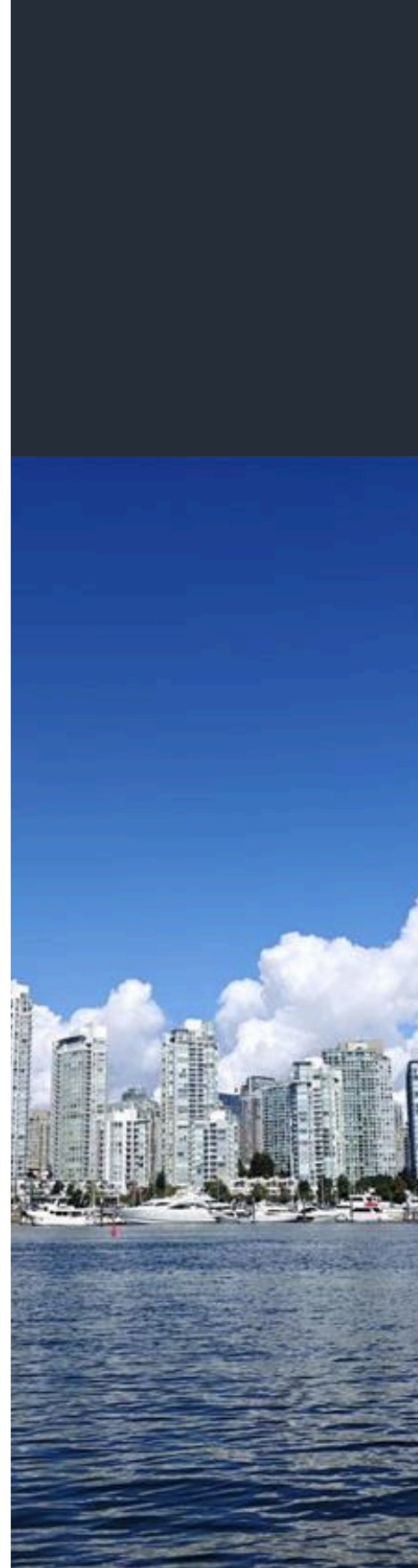
RESEARCH | RÉSEAU **IMPACT**
IMPACT | RECHERCHE
CANADA | CANADA

2025 ANNUAL REPORT

researchimpact.ca

Table of Contents

<u>Message from Network Director</u>	3
<u>RIC Overview</u>	4
<u>RIC Network Updates</u>	7
<u>New RIC Members</u>	13
<u>RIC Committee Work Updates</u>	16
<u>2025 RIC Engaged Scholarship Award</u>	21
<u>Future Skills Centre</u>	22
<u>Network Highlights/Success Stories</u>	23
<u>Get In Touch!</u>	30



A MESSAGE FROM THE NETWORK DIRECTOR

Sharing to create value for our members.



As we close 2025, RIC has 41 members and some applications for new membership for 2026 have been received. Everything we do aims to meet the knowledge mobilization and research impact needs of RIC members. For instance, we undertook deep engagement with members to develop the [RIC Strategic Plan 2024-2027](#), ensuring our goals for the next three years will align with our members' needs. We revisited those Strategic Priorities in the RIC Annual Meeting hosted by SFU in September and we crowd-sourced any new and emerging needs that fit our overall priorities as stated in the Strategic Plan. But then, sometimes, something external drives a need for all members.

In 2024, the Tri-Councils announced their new Narrative CV format that will be introduced over time for all grant applicants. Gone are the days of listing quantitative numbers of publications. Researchers are now required to qualitatively describe the impact the research/researcher has had. For sure, a researcher can describe their impact on scholarship, but other eligible categories include knowledge mobilization, community engagement, events, contributions to policies/guidelines, partnerships...all things very knowledge mobilization.

In Spring 2025, Eli Friedland from RIC member institution, Concordia University, asked to speak about the Tri Council Narrative CV at one of our monthly, member-driven Dr. RIC calls. He presented some of Concordia's initiatives to help researchers develop their Narrative CVs. On the call, someone from U. Calgary mentioned their work. Turns out U. Winnipeg is also ahead of the rest of us. It was decided on the spot that members needed a Narrative CV working group and everyone agreed to share resources, slides, guides, and programs so that the rest of us don't have to start from scratch. We set up a channel in the RIC Teams and are holding regular meetings.

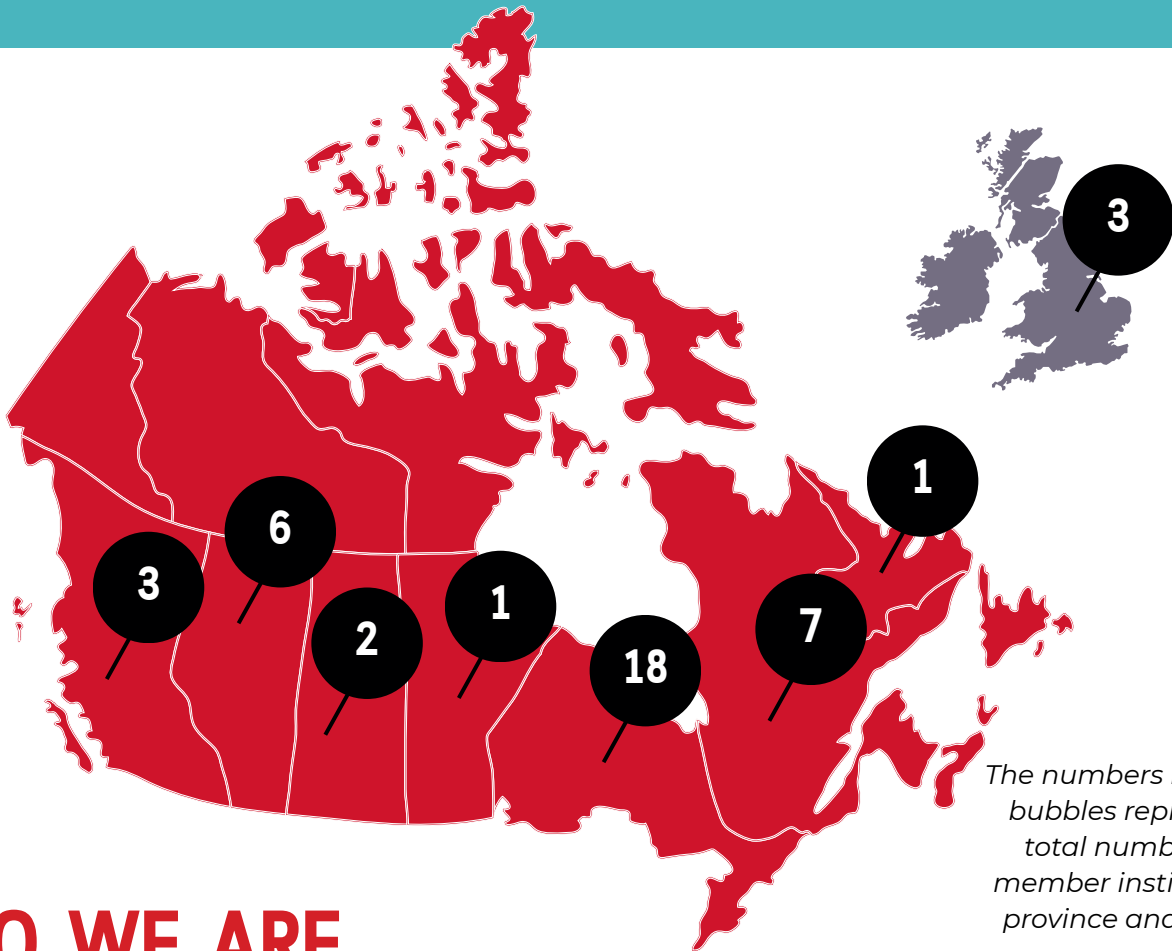
Sharing. That is what is at the core of RIC's activities. The RIC network is made up of the expertise and experience of RIC members. This expertise and experience in Narrative CVs is the latest example of value creation for RIC members. We all have to do it. Being a RIC member can help you collaborate with others and get access to others' resources.

This illustrates our [early evaluations](#) that the more you put in, the more you get out of your RIC membership.

David J. Phipps, Assistant Vice-President, Research Strategy and Impact, York University and Network Director, Research Impact Canada



RESEARCH IMPACT CANADA OVERVIEW



WHO WE ARE

Research Impact Canada is a pan-Canadian, bilingual network of 41 members with the goal of maximizing research for public good.

As a collaborative network, we work with a wide range of academic and non-academic partners, including librarians, researchers, research administrators, faculty, students, public sector leaders, and community organizations.

Our work spans across disciplines, reflecting our commitment to strengthening knowledge mobilization capacity building.



29

Universities



1

College



3

International



3

Hospitals



5

Research organizations

WHAT WE DO

We support universities and organizations across Canada in mobilizing knowledge beyond research outputs and into real-world impact. Through shared learning, co-developed resources, and training in knowledge mobilization, we help institutions build the capacity needed to turn knowledge into action.



Facilitate a **community of practice** by developing and sharing best practices, services, and tools



Help researchers and partners to **demonstrate the impact of their research** excellence through tools & training



Build institutional support for knowledge mobilization and encourage collaboration to connect research, policies, and innovations

*“Research Impact Canada is a pan-Canadian network dedicated to maximizing the **impact of research** for the public good.”*



41

Institutions
and counting



100+

People dedicated to
Research Impact



19

Years of turning
research into action

WHAT MEMBERS ARE SAYING

RIC continues to act as a catalyst of change across member institutions in the Network - strengthening capacity, connecting people, and embedding a culture of knowledge mobilization and research impact.

Building Internal Communities of Practice

Inspired by RIC's community of practice, RIC member institutions are breaking down silos and building internal communities of practice by bringing support staff, researchers, faculty, and other partners together.



““[...] In 2025, a UARI CoP was (re)launched (chaired by Rachel Hirsch [OVPR]) to reconnect the distributed expertise [across campus] and to act as a key mechanism for helping the university make better, more coordinated use of external networks and memberships, such as RIC. The UARI CoP currently brings together 18 research support professionals from OVPR, the Library, and External Relations for monthly meetings and is preparing to expand to include cross-campus representation.

CoP members actively engage with RIC through Dr. RIC sessions, the RIC Annual Meeting, the Narrative CV Working Group, MobilizeU, and the CAD CoP on Responsible Research Assessment, and then bring these insights back for shared learning and local adaptation.”

- **Rachel Hirsch, University of Alberta**



« Grâce à l'influence de sa participation au RIRC, l'UQAM veille maintenant à tenir des rencontres stratégiques de mobilisation des connaissances (aux 6 semaines = 8/an) entre le service aux collectivités, le service de la recherche et de la création et le service des partenariats et du soutien à l'innovation. Des rencontres ad hoc entre les professionnelles en MDC des services peuvent aussi ponctuellement avoir lieu. »

- **Anik Landry, Université du Québec à Montréal (UQAM)**





Strategic Plan Update

This year marked the second year of RIC's *2024-2027 Strategic Plan*. Reflecting on progress to date, the network has met many of the priorities outlined in the plan. At the 2025 RIC Annual Meeting, attention therefore shifted toward identifying opportunities for growth and improvement. Members were invited to collectively reflect on the network's needs and identify short- and long-term priorities.

In the **short term**, members emphasized the need for accessible and centralized support. Members cited the **RIC Narrative CV working group** as an example of a benefit the network provided in a timely manner, as well as the tremendous amount of resources shared among members, thereby reducing the need to “start from scratch.” There was also an interest in peer-to-peer mentorship models, such as a “buddy system” that pairs new RIC members with experienced members across the network. Members also identified opportunities for greater matchmaking - both inter-institutionally within RIC and externally through the global impact networks - for collaborative opportunities on grants, initiatives, events, and projects. Other short-term priorities expressed included advocacy around the undervaluation of KMb roles, navigating research security in partnerships and open sharing, and advancing French-first programming, such as a French version of the MobilizeU training program operating in parallel with the English-speaking program.

Looking to the **long term**, members called for more coordinated advocacy among institutions that do knowledge mobilization to different audiences and funders to promote the overall profession. There was also a mention of raising awareness of the precarity of KMb roles across the sector, including among U15 institutions and Universities Canada. Furthermore, there was a broad agreement on standardizing the profession itself, including developing a shared language, clearer articulation of what KMb practitioners do, and accreditation pathways. Regarding RIC network's long-term future, discussions were raised about a train-the-trainer program, Mobilize 2.0, and visibly highlighting the RIC resource repository.

Overall, the discussions reflect a network that is deeply engaged, clear-eyed about its challenges, and eager to build collective capacity through shared resources, stronger advocacy, and deeper connections across institutions and communities.



RIC 2025 Annual Meeting

This year's [RIC annual meeting](#), held on September 17-19, 2025 in the beautiful coastal city of Vancouver, British Columbia, brought together RIC members from across the country in a hybrid format to share learnings, strengthen connections and collaborations, and shape the network's strategic direction. Hosted by Simon Fraser University, RIC members spent three days:

- Discussing the network's priorities, including future directions in the short and long term
- Learning how other RIC members do knowledge mobilization at their institutions, particularly from the new members
- Participating in interactive group activities
- Hearing a keynote panel on how to co-create and mobilize knowledge to make urban living more accessible, and
- Engaging in a hands-on workshop on leadership inclusiveness.

RIC members also highlighted the value of dedicated time to connect with peers in person, engaging sessions, diverse topics, and the collaborative spirit of the meeting.



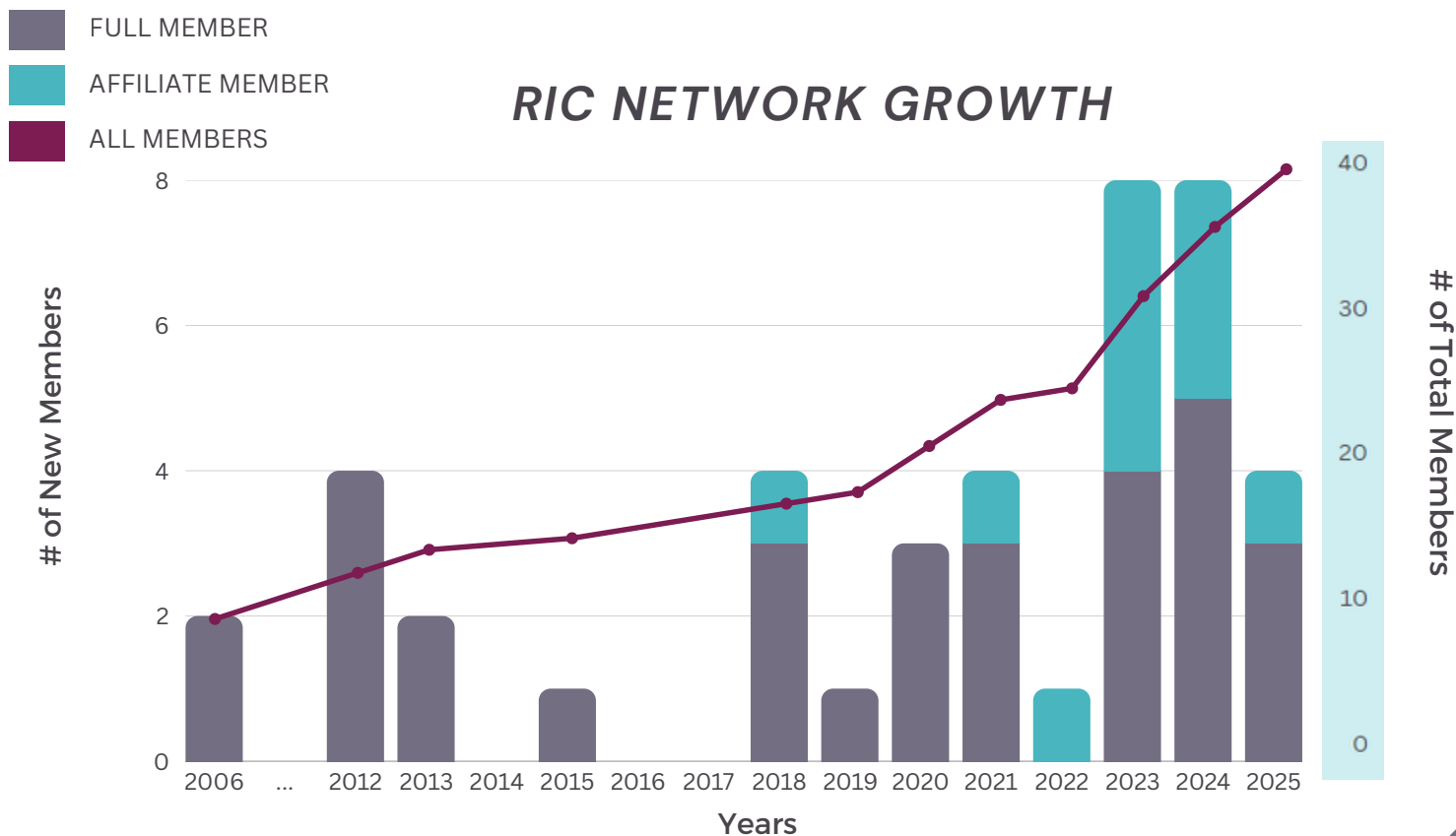
A huge thank you to **Lupin Battersby** and **Sophie Ashton** from the SFU Knowledge Mobilization Hub for hosting us and creating a space for meaningful dialogue, learning, and connection throughout the three days of the annual meeting.

New Member Application Process, Recruitment & Outreach

This year, RIC officially launched the new member application process, following 2024 consultations with network members to streamline it. New member applications are now accepted once a year by December, rather than on a rolling basis.

In addition, in consultation with the RIC Member Engagement and Implementation committees, RIC has adopted a strategic approach to recruiting new members. While RIC still welcomes applications from institutions and organizations engaged or interested in knowledge mobilization, the network is seeking to diversify its membership. This year, RIC looked to recruit members from Atlantic Canada and Northern communities. Talks have already been initiated with a few universities, organizations, and even governments from those regions.

RIC will continue to build relationships and explore opportunities to ensure the network better reflects the geographic diversity and composition of knowledge mobilizers across Canada.



Narrative CV Working Group

One of the newest initiatives to emerge from the network this year was the Narrative CV Working Group. It quickly became a valued space for RIC members to come together around a rapidly evolving area of the Tri-Agency Council funding requirements. Members shared how useful it is to convene with peers to make sense of the narrative CV requirements, exchange resources, and learn from one another's experiences across institutions. The working group also became a supportive space to ask questions and collectively navigate both the opportunities and challenges of moving beyond traditional metrics.

Throughout these conversations, RIC members built shared understanding, identified common needs for guidance and resources, and strengthened institutional readiness to support researchers, faculty, and graduate students. The strong engagement within the working group underscored the importance of a dedicated, member-driven space for exchanging ideas and resources.



Co-Chairs: **Nishat Tasnim** (University of British Columbia - Okanagan campus) (left) and **Eli Friedland** (Concordia University) (right)

“

“Participation in the RIC Narrative CV Working Group and attending webinars organized by the working group has contributed resources, examples, and national context that the U of Alberta has drawn on in developing some of its narrative CV resources.

Sharing of member institution resources accelerated development, reduced duplication, and supported alignment with emerging Canadian practices and a **more collective approach** to understanding new federal narrative CV requirements and **building institutional supports** as narrative CVs are expected to be required by the Tri-Agencies in the near future.”

- **Rachel Hirsch, University of Alberta**

”

WHAT MEMBERS ARE SAYING

Place to Share with other KMb Professionals

RIC also provides a visible platform and targeted audience for members to share and showcase their KMb work. Through the Dr. RIC sessions, the RIC annual meetings, RIC professional development webinars, and other events, members exchange ideas, conduct presentations, and receive valuable feedback. For many, the ability to both contribute to and learn from the network is a defining strength of RIC.



“We were able to share the work that we're doing regarding community compensation in community-engaged research with a wider/national group [at Dr. RIC] and gain some amazing insight into next steps.”

– **Shahad Al-Saqqar, McMaster University**

“A colleague and I presented recently at Dr. RIC regarding the professionalization of KMb (and I had presented on ‘communities of practice’ at Dr. RIC with another colleague in a previous year as well). These opportunities enhance my work at Waterloo as those of us involved in various initiatives of RIC have been able to advance the dialogue around knowledge mobilization and research impact and we see the cultural shifts in a variety of ways.”

– **Nadine Quehl, University of Waterloo**



NEW RIC MEMBERS

In 2025, RIC welcomed four new members. They are Brock University, Hospital for Sick Children, Mount Royal University, and Western University.

Brock University

Brock University is a public research university located in St. Catharines, Ontario. It is committed to mobilizing knowledge for meaningful societal impact, embedding this work across its institutional culture to drive positive change locally and globally.



Guided by its Strategic Plan, Brock strengthens connections between research and practice through interdisciplinary research, transdisciplinary institutes and centres, and strategic partnerships that bring together academia, industry, government, and communities to translate research into action.

Under the leadership of the Vice-President, Research, Brock's Research Enterprise - through the Research Impact Unit in the Office of Research Services - provides dedicated support, strategic guidance, and collaborative opportunities to ensure knowledge is accessible, applicable, and transformative, improving lives, informing policy, and advancing social, economic, and environmental well-being.

"Brock University's strategic plan, 'Transforming People, Reimagining the Future,' prioritizes addressing societal challenges through impactful research and global awareness."

Hospital for Sick Children (SickKids)

In alignment with The Hospital for Sick Children's (SickKids) commitment to [advancing the era of precision child health](#), the [Knowledge Translation \(KT\) Program](#) at the [SickKids Learning Institute](#) contributes to research innovation and impact by training and working with KT professionals, educators, clinicians, funders, and organizations to strengthen KT capacity and develop the KT profession, both nationally and internationally.



The KT Program offers several tools, resources, and professional development opportunities to support learners in developing knowledge translation skills, sharing research evidence, and implementing new practices and programs. SickKids is located in Toronto, Ontario.

"The SickKids' KT Program in the Learning Institute provides professional development opportunities, tools, and resources to support capacity-building skills and knowledge related to knowledge mobilization."

Mount Royal University

Based in Calgary, Alberta, Mount Royal University fosters a campus-wide culture of changemaking grounded in knowledge mobilization, empowering faculty and students to create meaningful impact in partnership with communities locally and globally. As an AshokaU Changemaker Campus, Mount Royal champions research excellence through community-engaged scholarship that equips researchers with the skills, resources, and opportunities to work collaboratively on complex social, economic, and environmental challenges. Committed to breaking boundaries and applying knowledge for the greater good, Mount Royal's researchers address real-world problems with integrity, and as a signatory to the San Francisco Declaration on Research Assessment (DORA), the university's approach to research and scholarship aligns with principles that value impact, quality, and responsible research assessment.



“The designation of MRU as an AshokaU Changemaker Campus and collaboration with MRU’s institutes is testament to our strength, leadership, and commitment in the area of community-engaged scholarship.”

Western University

Western University ranks as one of Canada's top research-intensive universities. A diverse group of innovative researchers, scholars, and artists advance and promote knowledge across the spectrum of fundamental and applied discovery, creative activity, and scholarship, providing tangible benefits for the economic, social, health, and cultural development of citizens around the world. The university engages with local, provincial, national, and global communities to drive research partnerships that make research not only accessible but also relevant and beneficial for social impact.



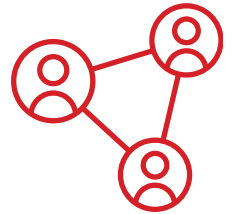
The Inclusive Research Excellence and Impact team at Western leads institutional knowledge mobilization strategies, including developing tools, resources, and training for researchers, staff, students, and trainees. The team facilitates programs that engage external partners and knowledge users to foster authentic and meaningful research collaborations, and advocates for inclusive research impact assessment.

“Western is committed to advancing inclusive research excellence, knowledge mobilization, and broad impact.”

WHAT MEMBERS ARE SAYING

Making Connections Across the Network

Equally important are the networking opportunities that RIC enables. Members consistently highlight the value of connecting with a diverse range of KMb professionals across disciplines, sectors, and regions. Notably, members emphasize that the diversity of perspectives within RIC - rather than uniformity - strengthens the practice of KMb.



“Connecting with members in person at the fall annual meeting gave me a warm and welcoming introduction to the RIC network and the valuable opportunity to network and learn from others.”

- **Cassidy Acheson, Simon Fraser University**



“The RIC platform has opened up valuable networking and collaboration opportunities with other universities, making it easier to know whom to approach when needed. [...] We truly value this partnership and, together, these engagements strengthen our internal capacity to support researchers and enhance research impact.”

- **Pranav Mishra, University of Winnipeg**





RIC COMMITTEE WORK UPDATES

Professional Development Committee

From Co-Chairs **Michael Johnny** (York University) (left) and **Alyse Pearce** (Athabasca University) (right):

2025 was an important year for the Professional Development (PD) committee for RIC. Looking back, we spent time and energy on governance and structural development; strengthening our foundation to deliver better service across our Network. We ratified a new Terms of Reference and clarified our objectives as a Committee: Providing professional development opportunities, creating space for peer sharing, and helping expand the profession of knowledge mobilization.



Activities from the past year included sessions on Institutional Knowledge Brokering, led by emerging scholarship from Dr. Stephen MacGregor, work to reintroduce the KMb Exchange Program, hosting webinars, and an inaugural Broker Bruch session. We have plans for the coming year to lead development on a KMb Masterclass to complement MobilizeU development, build and strengthen PD content on the RIC website, and make contributions at the upcoming CKF in Summer 2026.

We have space for further participation on our committee if there's any interest from members with interest and capacity. Our thanks to Network staff for their support over the past year.

Evaluation Comamittee

From *Evaluation Ninja*, **Stephen MacGregor** (University of Calgary) (right):

Over the past year, the RIC Evaluation Committee, with the support of Dr. Stephen MacGregor (University of Calgary), completed the core data collection phase of the network evaluation and refined the original framework to better capture RIC's impact. The initial proposal outlined three objectives:



- Case studies of systematic knowledge mobilization (KMb) approaches
- Network-based mapping of KMb roles through interviews, and
- An institutional capacity survey using the Institutional Healthcheck instrument.

To streamline the design and reduce burden on members, the first two objectives were merged, resulting in 38 in-depth semi-structured interviews incorporating ego-network mapping with KMb professionals across the network. The third objective was recalibrated in consultation with the Professional Development Committee to focus more directly on institutional KMb planning rather than implementing a broad survey instrument.

Data collection concluded some time ago, and the resulting dataset provides a strong empirical foundation for examining members' career trajectories in KMb, structural time and resource constraints, and evolving commitments to equity, diversity, and inclusion, among other related topics.

The current phase centers on deeper analysis, synthesis, and reporting, as well as informing strategic next steps for the network. The dataset supports the development of institutional profiles, cross-case analyses, network ego-map visualizations, and bilingual executive briefs aligned with the refined objectives. Specific outputs beyond those already shared will be prioritized in consultation with the membership, depending on interest and strategic need.

Early outputs have already supported network activity, including a webinar on Institutional Knowledge Mobilization Planning attended by more than 100 participants, a published article in the *International Journal of Education Policy and Leadership*, and a student-led manuscript currently in press. The evaluation has also informed forward-looking initiatives, contributing to a successful SSHRC Insight Grant and a SSHRC Research-on-Research proposal that will be submitted if this funding opportunity is renewed in 2026.

Bilingualism and Francophone Committee

The Bilingualism and Francophone committee remains an important part of the Network's commitment to advancing French inclusivity and engagement. While the committee maintained a quieter profile in 2025, this period provided an opportunity to reflect on its role, priorities, and the evolving needs of Francophone members and partners within the network. Key areas were identified where RIC can further embed bilingualism—not only through translation, but through more intentional, culturally responsive approaches to engagement, collaboration, and knowledge sharing.

Looking ahead to 2026, with a new chair in place, the committee will take on a more active role in advancing new initiatives. These include strengthening connections with Francophone institutions and communities, enhancing the visibility of Francophone-led work across RIC, and supporting more consistent integration of bilingual practices across network activities and resources.



*Co-Chairs: **Connie Tang** (RIC) (left) and **Ousmane Sarr** (University of Ottawa) (right)*



MobilizeU Committee

In 2025, the committee continued to oversee the delivery and evolution of RIC's flagship training program, MobilizeU, with a focus on strengthening both access and participant engagement.

Several enhancements were introduced over the year. The registration process was streamlined into a two-stage model, enabling RIC member institutions to pre-register and secure priority spots ahead of the broader public launch, after which remaining spots were opened to additional RIC members and external participants. The committee also updated three core content videos with new expert perspectives and hosted a bilingual session to better reflect RIC's commitment to French inclusion. New participation requirements were also introduced, asking participants to attend a minimum of six live sessions and complete at least two assignments. These changes led to measurable outcomes across the program: a 10% increase in overall completion rates, the highest number of assignment submissions to date, and stronger average attendance at live sessions. Finally, MobilizeU generated modest revenue from 15 paid registrations, indicating growing interest beyond the RIC membership.

Looking ahead to 2026, a MobilizeU toolkit will be piloted with one institution and one project. Efforts will also focus on program sustainability for a growing RIC Network to ensure that MobilizeU remains a quality and reputable training program for knowledge mobilization.



Co-Chairs: **Krista Jensen** (York University) (left) and **Lupin Battersby** (Simon Fraser University) (middle) and MobilizeU coordinator, **Sophie Ashton** (Simon Fraser University) (right)

314

Total Registrants

- 39 RIC member institutions
- 7 participants from non-RIC organizations

199

Completed Course Certifications

WHAT MEMBERS ARE SAYING

Professional Development

The MobilizeU program remains a cornerstone of RIC's impact. Across institutions, MobilizeU is widely recognized as a valuable, professional development opportunity that builds both individual skills and institutional capacity for knowledge mobilization. Participants report increased confidence in applying KMb principles, stronger engagement with partners and communities, and an enhanced ability to integrate impact into their daily work.



“Being a part of the RIC network has allowed us to continue our goal of increasing research socialization across our hospital and creating opportunities for staff in other departments beyond Research & Academics to learn more about knowledge mobilization. [...] The MobilizeU course helped to prepare staff and project teams to lead their own knowledge mobilization activities, increasing the capacity for reach and impact of their work.”

- **Kristy Allen, Waypoint Centre for Mental Health Care**

“As part of my responsibilities as a program manager at SickKids, I participated in the MobilizeU course with the intention of incorporating key learnings into my collaborative work with colleagues. Completion of the MobilizeU course broadened my perspective on our program and strengthened my ability to engage with others. During the eight-week course, I had the opportunity to learn from professionals engaged in impactful work. This experience deepened my understanding of knowledge mobilization and equipped me to apply these concepts directly in my daily role.”

- **Program Manager, Hospital for Sick Kids**

RIC 2025 ENGAGED SCHOLARSHIP AWARD WINNERS

RIC was thrilled to celebrate four outstanding scholars – two in the Doctorate category and two in the Master’s category—whose work exemplifies the principles of reciprocity, democratization of knowledge, and meaningful societal change.

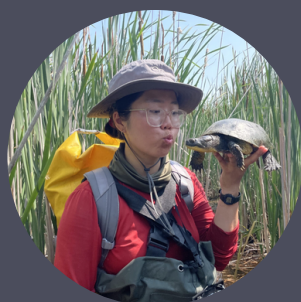
Doctorate Winners



Katrina Leclerc

Saint Paul University, Faculty of Human Sciences, School of Conflict Studies

Project: *“Accessing Knowledge: Youth, Peace and Security (YPS) Library”*



Reta Meng

McMaster University, Department of Biology, Landscape Ecology

Project: *“Mshiikeh Ganaawaabanjige: Weaving Anishinaabe Knowledge and Western Science for Freshwater Turtle Conservation”*

Master’s Winners



Sarah Demedeiros

University of Alberta, School of Public Health, Health Policy

Project: *“Digital Storytelling for Intergenerational Health and Well-Being: A Decolonized Approach to Disseminating and Preserving Indigenous Elder Knowledge in Health Research”*



Rowan Harris

McMaster University, Department of Geography, School of Earth, Environment, and Society

Project: *“Understanding Holistic Indicators of Goose Health around Arviat, Nunavut”*

PARTNERSHIP: FUTURE SKILLS CENTRE

Throughout 2025, RIC, in partnership with the [Future Skills Centre](#) (FSC), hosted a series of five virtual Peer Learning Groups (PLGs) to support collaborative learning and dialogue among professionals working in Canada's skills training and workforce development ecosystem.

Each session was designed as a welcoming space where practitioners, policymakers, employers, researchers, and community organizations could engage in deeper conversations following FSC's thematic webinars. The PLGs included breakout room discussions with facilitators guiding participants to share their experiences, strategies, and resources through practical questions.

Overall, these PLGs demonstrate that RIC and FSC are creating the space needed for professionals working in the skills training and workforce development sector to share best practices, challenges, and resources on emerging issues across Canada.

2025 Peer Learning Groups



Innovating for Impact:
Evaluation and Learning
in Canada's Skills
Ecosystem



Advancing Inclusion:
Learning with Black
Communities
in Canada



Pathways to Jobs:
Microcredentials, Work-
Integrated Learning, and
Labour Market Information



Building Economic Resilience:
Skills Development in Indigenous
and Northern Communities



On the Road to Net Zero:
Global Lessons from Place-
based Skills Development

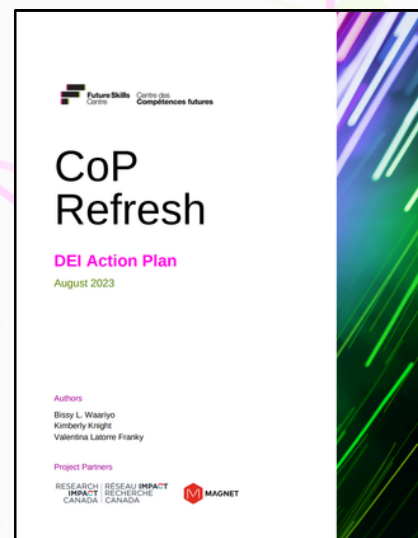


BRIDGING KMB AND INCLUSION

Paper: “Bridging Knowledge Mobilization and Inclusion by Developing a Community of Practice DEI Action Plan”

The **RIC leadership team** successfully published a paper on “[Bridging Knowledge Mobilization and Inclusion by Developing a Community of Practice DEI Action Plan](#)” in *Equality, Diversity and Inclusion: An International Journal*.

The paper demonstrates that knowledge mobilization and DEI are mutually reinforcing. Drawing on experiences from York University and Research Impact Canada’s partnership with the Future Skills Centre, the article shares lessons on how to practically execute knowledge mobilization activities for a community of practice while ensuring principles of diversity, equity, inclusion, and accessibility are incorporated throughout the process.



Co-Authors: **Bissy Waariyo** (Laansa Consulting) (left), **David Phipps** (York University) (middle), **Connie Tang** (Research Impact Canada) (right)

WHAT MEMBERS ARE SAYING

Wealth of Resources and Inspiration

RIC members have also cited the network as a vast wealth of resources, ideas, and peer examples, which have inspired them to develop their own in-house resources and use existing resources created by RIC and other RIC members.



“At uOttawa, we have also developed a narrative CV working group across faculties to co-learn and co-develop resources in order to better prepare our researchers to articulate the impact of their work. We are also interested in forming a community of practice across francophone and bilingual postsecondary institutions to develop a common language around research impact, as well as create and share resources.”

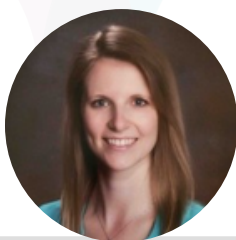
– **Reisa Klein, University of Ottawa**

“Our involvement in RIC has also inspired us to create some in-house resources, such as a Knowledge Mobilization for Grant Applications Toolkit (in progress) and investigating the relationship between knowledge mobilization and the use of AI in 2025-2026, with the goal of sharing best practices or hosting a workshop. We look forward to sharing some of these resources with the broader network.”

– **Caroline Flocari, Carleton University**



The adaptation of shared resources has also reduced duplication and accelerated KMb capacity building across the network.

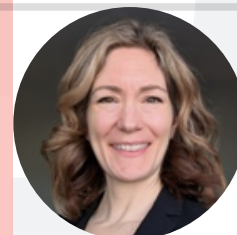


“I used RIC’s knowledge mobilization planning chart in a faculty workshop I developed and received positive feedback from researchers who were excited to use the tool in their upcoming grant application. Through the sharing of RIC newsletters and resources, I am slowly seeing our faculty members better understand what RIC is about and how it can support their research, and ultimately its impact.”

– **Nicole Westlund-Stewart, Lakehead University**

“During knowledge mobilization consults, U Calgary team members have shared RIC Resources and Modules as additional learning and support.”

– **Stephanie Warner, University of Calgary**



NETWORK HIGHLIGHTS/SUCCESS STORIES

Webinar: “Institutional Knowledge Mobilization Planning”

In May 2025, **Dr. Stephen MacGregor (University of Calgary)** (*right*), presented a webinar on “Institutional Knowledge Mobilization Planning.” This session explored how universities can more intentionally support and embed knowledge mobilization (KMb) within institutional strategies. Over 100 attendees showed up.



Drawing on a 2023 study analyzing KMb planning documents from four research-intensive universities, the webinar highlighted key components of effective institutional approaches. Participants gained practical insights and actionable building blocks to help initiate or refine knowledge mobilization plans tailored to their own organizational contexts.

Thanks to the Professional Development committee for organizing the webinar.

Webinar: “Navigating Narrative CVs in Canada: Preparing for the Transition”

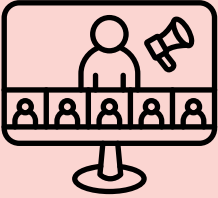
In November 2025, **Dr. Raad Fadaak (University of Calgary)** (*left*) and **Dr. Eli Friedland (Concordia University)** (*right*) co-facilitated a highly engaging and timely webinar on the transition to narrative CVs in the Canadian research ecosystem.



The session brought together researchers, faculty, and administrators from across the Network to explore this significant shift. Discussion topics included practical approaches to building narrative CV capacity, aligning narrative CVs with equity, diversity, and inclusion (EDI) priorities, and strategies to support researchers as they adapt to evolving application frameworks. Over 100 attendees showed up for the webinar.



Attendees particularly valued the opportunity to engage in open, peer-informed dialogue. The session underscored RIC’s role as a national convener - providing a platform for members to collectively navigate change, exchange emerging practices, and understand new approaches to articulating research impact.



The strong participation and positive feedback from both these webinars highlighted the importance of creating responsive, member-driven programming.

RIC will continue to offer opportunities for shared learning and dialogue as needed for its members.

Paper: “Canadian approaches to research impact and its assessment”

David Phipps and colleagues, Kathryn Graham (Alberta Innovates) and Eddy Nason (Canadian Health Services and Policy Research Alliance), contributed an article, “[Canadian approaches to research impact and its assessment](#),” to the journal, *Research Evaluations*. The article addresses how research impact is approached and evaluated from a Canadian perspective, using examples from their own experiences of working in organizations that engage in knowledge mobilization.



Co-Authors: **David Phipps** (York University & Research Impact Canada) (left), **Kathryn Graham** (Alberta Innovates) (middle), and **Eddy Nason** (Canadian Health Services and Policy Research Alliance) (right)



This scholarly contribution demonstrates that RIC and its partners continue to advance thought leadership in knowledge mobilization and reinforce Canada’s role as a global leader with a unique perspective for moving the needle on research impact.

French Translation of University of Calgary's "MSC Guide"

Since the inception of the Narrative CV Working Group this year, members have found the resources shared between institutions tremendously helpful.

In June 2025, Concordia University (Concordia U) collaborated with the University of Calgary (U Calgary) to translate U Calgary's "Most Significant Contribution" Guide in French with the support of the RIC network. The request came from Concordia U's discussion with other francophone universities and researchers in Quebec. Since then, the guide is now available in both English and French on U Calgary's [website](#).



The translation of this guide highlights one of the many benefits of being part of the RIC network: the willingness to share resources and expand accessibility through linguistic inclusivity demonstrates the network's collective commitment to equity, collaboration, and impact across Canada.

CIGI Presentation: "Introduction to Knowledge Mobilization"

In February 2025, RIC was invited to present virtually to the Centre for International Governance Innovation (CIGI)'s Digital Policy Hub for the first time, highlighting the network's expertise in knowledge mobilization. The session explored practical approaches to embedding KMB into research and policy contexts, drawing on examples and tools from across the RIC community. As one of RIC's members, CIGI's engagement reflects the strength of the Network in fostering cross-sector learning and extending the reach of impact beyond academia.

“

They put so much work into this presentation and to tailoring it to a policy audience and using tech relevant examples. It was really clear how thoughtfully they had prepared and how tailored the presentation was to our group. It worked really well and the Fellows were so engaged. We alternate skills sessions (like this one) with subject matter (ex. space law) presentations during the term. The skills sessions usually have far fewer questions at the end. I think this one set a record! So many questions and comments!”

- **Dianna English, Centre for International Governance Innovation**



”

Inter-Institutional Matchmaking Database



One of the new ideas to emerge this year among RIC members was developing an inter-institutional matchmaking database to strengthen partnerships across the network. Members highlighted the need for a virtual space to capture researcher expertise, interests, and capacity for collaboration.

In particular, there was a need for alignment on external funding grants, particularly for those grants with low success rates without strong partnerships. This is where structured matchmaking amongst RIC members could improve competitiveness. The database aims to have the following features:

- A centralized, searchable system to identify expertise across institutions
- A place to enable expressions of interest and partnership-building
- Recognition that matchmaking may also support event-based networking, not just project collaborations
- The role of RIC members as liaisons to facilitate engagement

We look forward to launching the database next year.



WHAT MEMBERS ARE SAYING

Institutional Culture Change

The RIC network has contributed to culture change within member institutions. Members report greater awareness of research impact, increased collaboration across units, and more intentional integration of KMB into institutional priorities.

“RIC has provided us with tools and resources that we have integrated into our day-to-day knowledge mobilization activities and has supported learning across our broader team through presentations and shared expertise. This engagement has strengthened our understanding of impact and helped embed knowledge mobilization more intentionally within our work.

Notably, RIC supported us in developing an impact framework that we now use to demonstrate our organizational impact to influential stakeholders. Overall, RIC has become an invaluable partner in building our capacity and advancing our impact.”

- Deb Denman, Chronic Pain Centre of Excellence for Canadian Veterans



“With thanks to stellar examples from other members of the RIC network, the Weston Family Foundation is incorporating knowledge mobilization at the start of ideation and strategic planning of new programs.

Hearing from others on the monthly Dr. RIC calls and at the RIC Annual Meeting provided us with inspiration, valuable lessons learned and great ideas”

- Selga Apse, Weston Family Foundation



CONCLUSION

As RIC looks ahead, the Network remains grounded in what has always set it apart: a commitment to collaboration over competition, shared learning over silos, and action over intention.

In 2025, RIC members did more than exchange ideas - they co-developed resources, built working groups, expanded access through bilingual initiatives, and embedded knowledge mobilization more deeply within their institutions. Together, these efforts are shaping a more connected, inclusive, and impact-driven network across Canada.

RIC TEAM



David Phipps

Assistant Vice-President, Research Strategy and Impact, York University | Network Director, RIC
dhipps@yorku.ca



Bissy Waariyo

Director, Operations, RIC
bissyw@yorku.ca



Sandy Chan

Sr. Knowledge Mobilization Specialist, RIC
sdychan@yorku.ca



Sophie Ashton

MobilizeU Coordinator, RIC
sophie_ashton@sfu.ca

GET IN TOUCH!

Here are ways to stay connected and up to date on RIC activities:



RIC website: Check out the [RIC website](#) for our latest blog posts, journal clubs, knowledge mobilization resources and more!



Newsletter: RIC's monthly newsletter highlights news from the network and shares upcoming events and opportunities in knowledge mobilization. [Sign up](#) to stay up to date!



Social media: Connect with us on our social media – we're active on both [LinkedIn](#) and [BlueSky!](#)

JOIN THE NETWORK!

[Interested](#) in becoming a part of the Research Impact Canada Network?

RIC is seeking new members who are actively building their knowledge mobilization capacity, including Canadian and international institutions that have:

- **Documented commitment to institutional knowledge mobilization and research impact:** an established university plan, research plan, engagement plan, or other document that identifies knowledge mobilization or a related activity as an institutional priority
- **Established investment in knowledge mobilization supports,** such as community/public engagement, community-based research (CBR), research support, communication, social innovation
- **Desire to share their expertise as well as learn from others**

If this describes your institution, check out our [New Member Application package](#) and please send us an email at info@researchimpact.ca!